

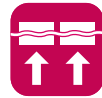
GYROSKIMMER



YD-GYP

Our Double-Float Structure makes the skimmer keep securely floating at any liquid level and collecting the surface oil with independent heaving of main floats and gate floats.

YD-GYP Features



Double-Float Structure

Internationally-patented Double-Float Structure makes the skimmer keep collecting and transferring oil at any level of water surface



Oil Collection & Transfer

A single GyroSkimmer can do both collection and transfer of the floated oil



Durability Guaranteed

GyroSkimmer provides high and stable durability even with oil with abrasive particles, chips, dirt, etc.



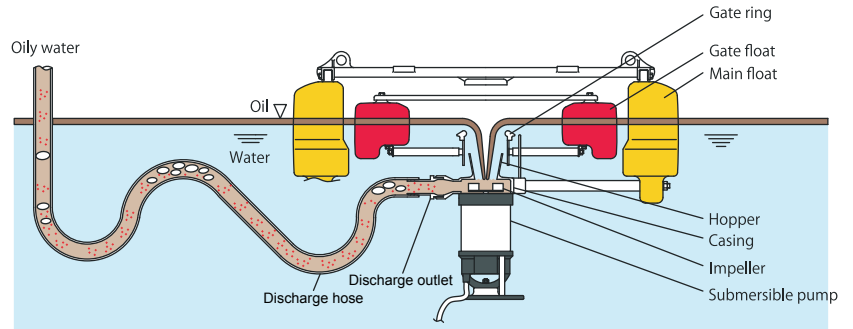
Single or Three Phase

2 types (single-phase and three-phase) are available for each model

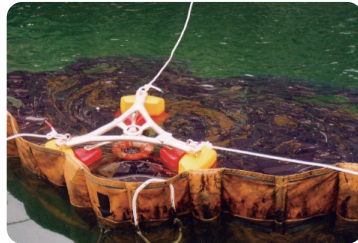


Lightweight

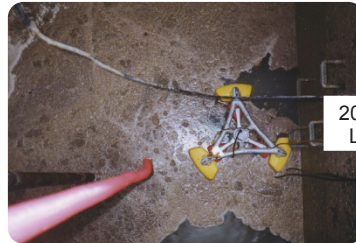
40% lighter than competitors' models. Frame materials are optional (AI molded parts or lightweight SUS)



In a Coolant Tank



Skimming heavy oil spilled at sea



Collecting oil-based scum at a food-processing company



20 min. Later

Less Wastewater

Reduced Cost

Environmentally Sustainable

With Our Skimming Technologies

YD25-CS Features



Heat Resistant to 90°C

Continuous operation with steady performance under high-temperature environment



High-Speed Skimming

Collects floated oil at a high speed



Easy Maintenance

Easy maintenance with a sealless screw pump and separator with no consumable parts



Oil-Water Separation

Efficient oil-water separation due to the pump structure which makes it difficult to agitate water and oil



Troubleless Design

No chip-related issues with a sealless screw pump. Resistant to dry running



WASHING SAVER

YD25-CS SERIES

チャンバー

GYROSKIMMER YD-GYP

Product		Floating skimmer with a submersible pump			
Usage Condition		Waste water at normal temp to 40°C (104°F)			
		No acid or organic solvent			
What can be Removed		Mineral oil, animal/plant oil, scum, powder on the water			
Model		YD-600GYP	YD-800GYP	YD-1000GYP	YD-1200GYP
Installation Area		1 m x 2 m (3'3" x 6'7")	2 m x 3 m (6'7" x 9'10")	3 m x 3 m (9'10" x 9'10")	5 m x 5 m (16'5" x 16'5")
Specs	Performance	4 m@15 LPM (13'@3.9 GPM)	4 m@40 LPM (13'@10 GPM)	7 m@50 LPM (22'@13 GPM)	7 m@100 LPM (22'@26 GPM)
	Output	1 ph/115 V/60 Hz 1/3 hp	1 ph/115 V/60 Hz 1/3 hp	1 ph/115 V/60 Hz 1/2 hp	1 ph/115 V/60 Hz 1 hp
	Weight (approx.)	13 Kg (29 lbs.)	22 Kg (49 lbs.)	23 Kg (51 lbs.)	28 Kg (62 lbs.)
	Submersible Pump	Body: SUS304 Impeller: Glass-fiber reinforced ABS resin Shaft Seal: Double mechanical seal			
Materials	Frame	AC (polyester resin powder coating)			
	Casing	SCS13	AC (polyester resin powder coating)		PVC
	Float	Main float/Gate float: PE resin-molded part (exclusive)			
	Cable	5 m (16') of cabtyre cable for submersible pump: VCT			
Accessory	Flexible Hose	ø25 mm x 5 m (ø1" x 16')	ø38 mm x 5 m (ø1.5" x 16')	ø38 mm x 5 m (ø1.5" x 16')	ø50 mm x 5 m (ø2" x 16')
Options	Cable Length	10 m/15 m/20 m (33'/49'/66') available for cabtyre cables *Contact us for a cable longer than 25 m (82')			
	Voltage	Single Phase 115 V/Three Phase 460 V			
	Debris Net	Anti-debris net (PE) all around Gyroskimmer			

WASHING SAVER YD25-CS SERIES

Product		Washing Saver		
Specs	Model	For Shallow Tanks	Standard	For Deep Tanks
		YD-25CS400N-80F	YD-25CS600N-150F	YD-25CS800N-200F
	Amount of Oil to be Collected	Up to 300 LPH (79 GPH) or 5 LPM (1.3 GPM)		
	Operating Temp.	Normal Temp - 90°C (194°F)		
Pump	Material	SUS304 (Al for a part of non-wetted area)		
	Surface Flowing Range	80 mm (3.2")	150 mm (5.9")	200 mm (7.9")
	Pump Length (in the tank)	400 mm (1'4")	600 mm (1')	800 mm (2'4")
	Footprint (Water Surface)	330 mm x 250 mm (13" x 9.8")		
	Structure	Sealless screw type		
	Performance	Discharge amount: 6 L (1.5 gl.) at 60 Hz, TDH: 1.5m (5')		
	Motor	3Ph: 200/230/380V, 4P, 90 W (0.12 hp)		
	Material	Casing	SUS304	
		Impeller	CFRPP molded	
		Seal	No mechanical seal	
	Bearing	PTFE		
	Shaft	SUS304 (shaft sleeves in contact with bearings are replaceable)		
Separator	Material	SUS304		
	Dimension	421 x 426 x 723 mm [1'5" x 1'8" x 2'5"] (scraper motor not included)		
Accessory	Wire-reinforced soft PVC flexible hoses ø25 x 5 m and ø38 x 1 m (one each)			